

Import Rights Deliverability Assessment

**(Follow up to question from the
1-22-2014 ICAP WG Meeting)**

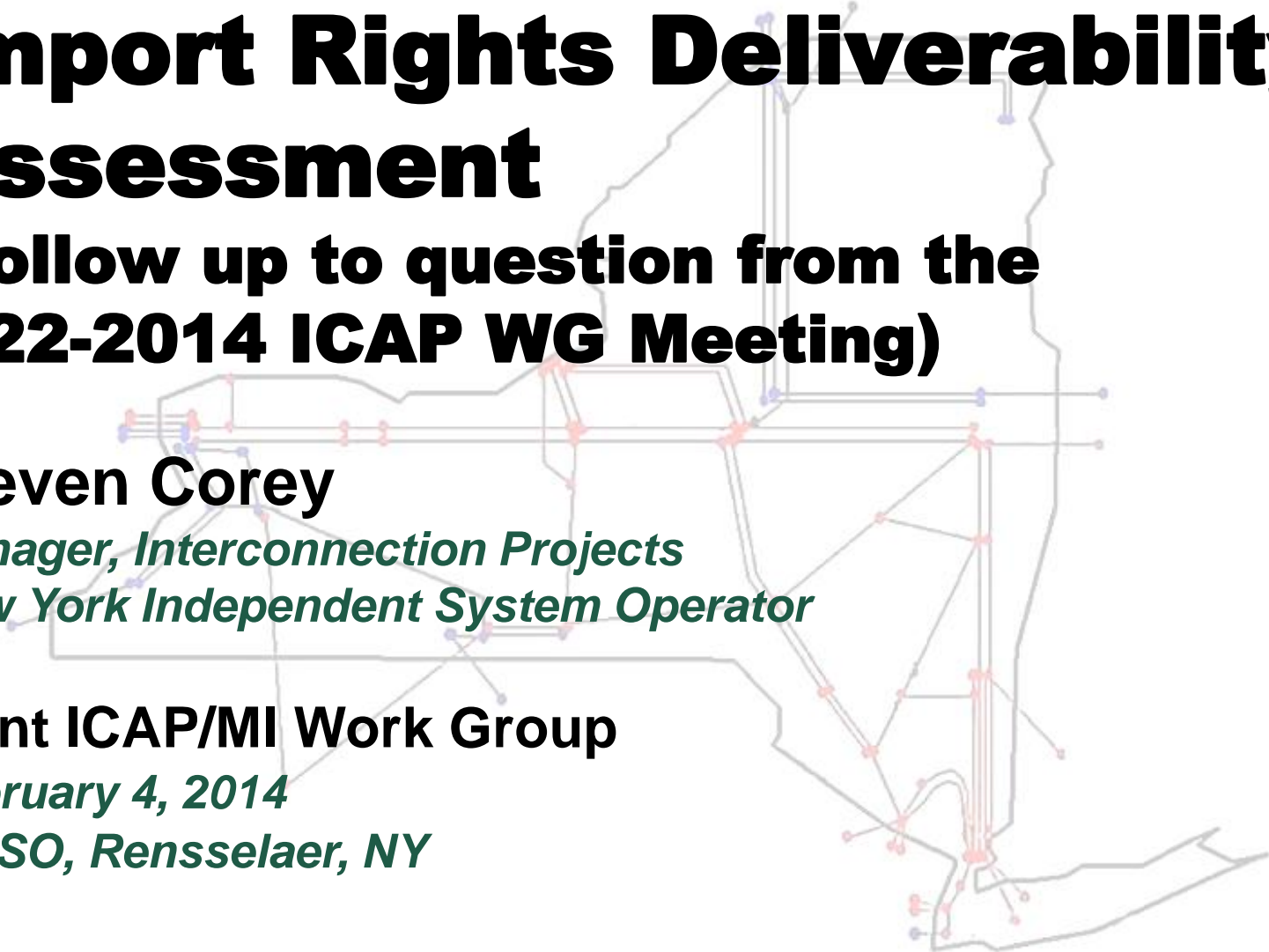
Steven Corey

*Manager, Interconnection Projects
New York Independent System Operator*

Joint ICAP/MI Work Group

February 4, 2014

NYISO, Rensselaer, NY



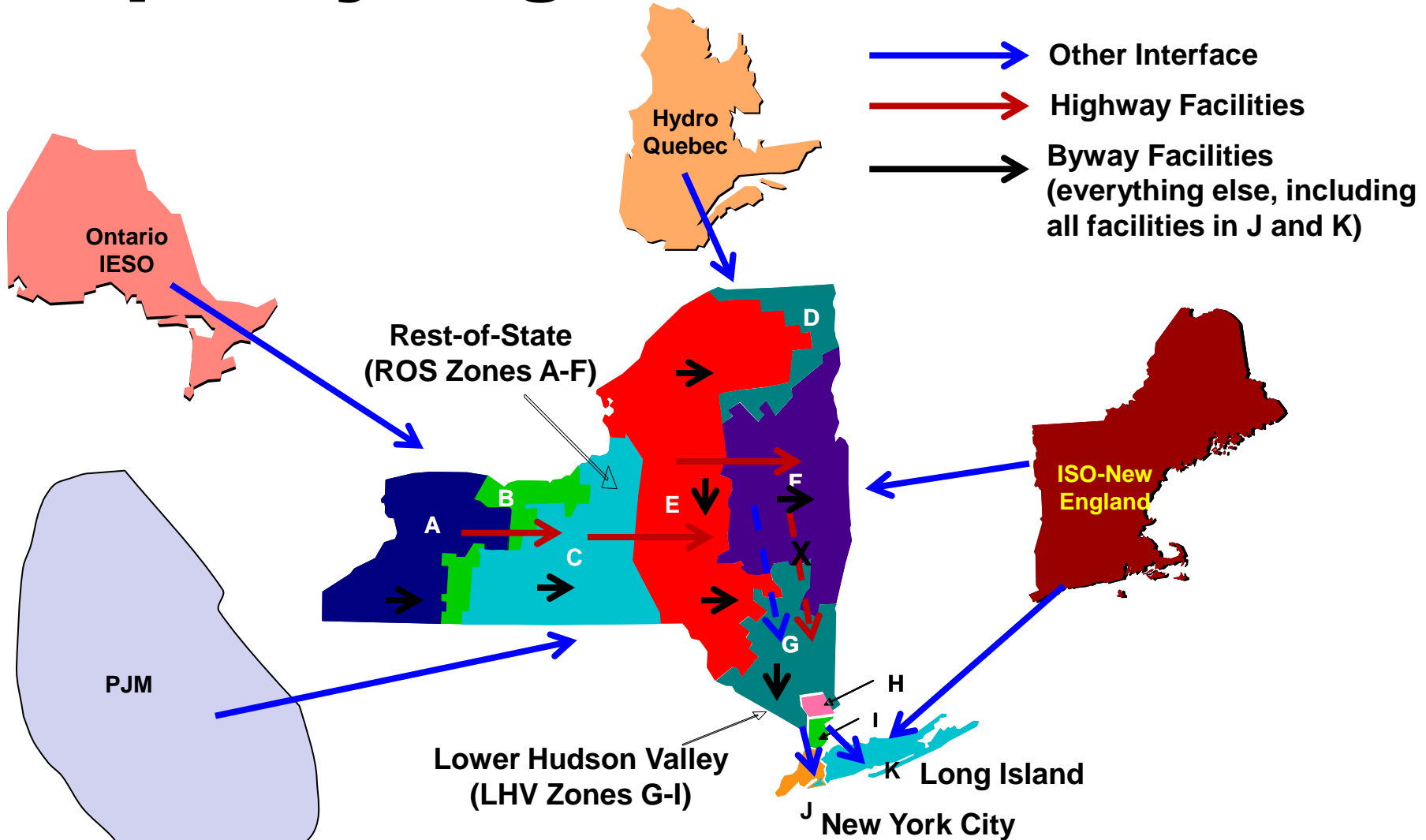
Topic/Outline

- ◆ Topic - Question from the 1/22/2014 ICAP WG meeting regarding the methodology used in the Annual Import Rights Deliverability Assessment, post-New Capacity Zone (NCZ)
- ◆ Background / References
- ◆ Overview of Import Rights Deliverability Assessment Objectives and Methodology, Post-NCZ

Background / References

- ◆ **Ciani presentation at 1/22/2014 ICAP WG re: External ICAP Allocation for the 2014 through 2015 Capability Year**
- ◆ **Corey presentation at 2/14/2013 ICAP WG re: Implementation of New Capacity Zone in Class Year Deliverability Studies**
- ◆ **Corey presentation at 4/18/2013 ICAP WG re: Evaluation of a Request for External CRIS Rights Sourced from PJM Under the Proposed Revisions to the Deliverability Methodology (to Incorporate the NCZ)**

Capacity Regions and Facilities



References / Background

Reference from Corey 2/14/13 presentation:

- ◆ **Effect of NCZ on Performance of Deliverability Tests:**
 - *Evaluation of requests for External CRIS Rights – Deliverability evaluation will continue to consider that the requested External CRIS Rights “sink” to ROS Capacity Region. The NCZ affects the definition of the ROS Capacity Region.*
 - *(The above statement pertains to requests for External CRIS Rights under Section 25.7.11 of OATT Attachment S.)*

Import Rights Assessment

- ◆ **Consists of Two Basic Steps:**
 - *Step 1 Reliability Assessment – Determination of Import Rights Limits based on Resource Adequacy Criterion (LOLE)*
 - *Step 2 Deliverability Assessment – Evaluation of Deliverability of Import Rights Limits from Step 1. If not fully deliverable, determine the level of Import Rights Limits that are deliverable, if any. Also evaluates deliverability of any Available ETCNL, i.e., ETCNL Rights above NYSEG’s election.*

Import Rights Limits & ETCNL

	PJM	ISO-NE	Quebec through Chat
Grandfathered Rights and ETCNL	1080	0	1090
Import Rights Limits from Reliability Assessment	1080	300	1110
NYSEG ETCNL Election	100 * (* hypothetical example)		

Note: All values in MW

Deliverability Assessment

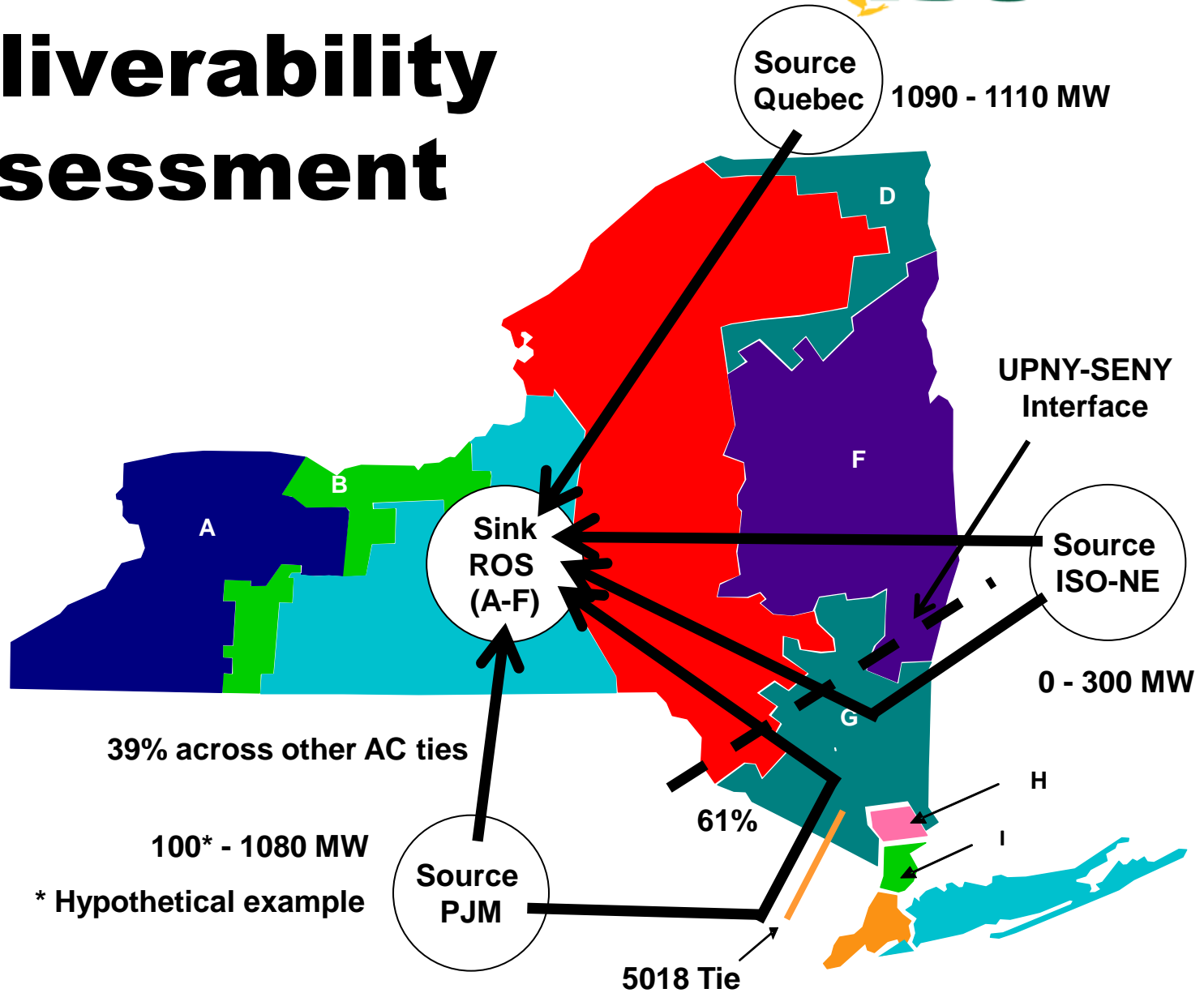
◆ Objectives:

- *Assess Deliverability of Import Rights Limits (from Reliability Assessment) and Available ETCNL*
- *If Deliverability issues are identified, determine level of Import Rights and Available ETCNL that is deliverable, if any.*

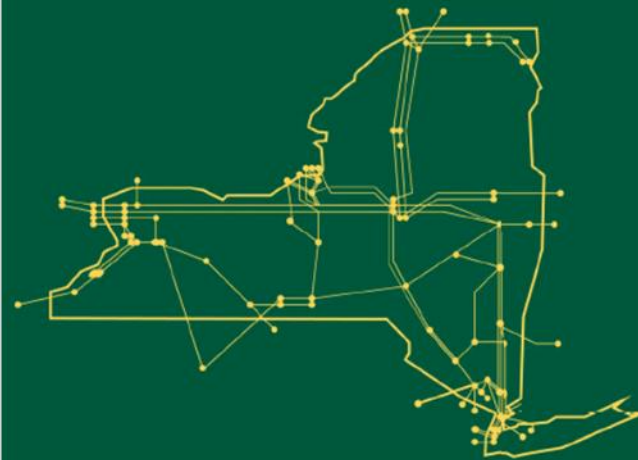
◆ Methodology:

- *Imports Tested Simultaneously and Sink to Rest-of-State*
- *Two Sets of Tests:*
 - **Highways & Byways Tests for Rest-of-State (looks for transmission criteria violations / bottled capacity)**
 - **Other Interfaces Tests (evaluates impact of delta imports on Total Transfer Capability of Other Interfaces applicable to adding capacity to Rest-of-State, including UPNY-SENY)**
- *If deliverability issue identified, reduced limits determined based on sensitivity of individual import sources.*

Deliverability Assessment



The New York Independent System Operator (NYISO) is a not-for-profit corporation responsible for operating the state's bulk electricity grid, administering New York's competitive wholesale electricity markets, conducting comprehensive long-term planning for the state's electric power system, and advancing the technological infrastructure of the electric system serving the Empire State.



www.nyiso.com